

ID	Task Mode	Task Name	Resource Names	CR_Status	Feb 23, '14		
					S	M	T
1		<b>Phase 1</b>					
2		<b>C 1. Kickoff</b>		<b>Parent</b>			
3		Introductions	Internal, Vendor	Done			
4		Review the High-Level Program	Internal, Vendor	Done			
5		Present the Project Plan	Internal, Vendor	Done			
6		Discuss Preliminary Project Timeline	Internal, Vendor	Done			
7		<b>C 2. Scoping Phase</b>		<b>Done</b>			
8		<b>Graphic Design</b>		<b>Parent</b>			
9		Design Consultation with D-Link	Vendor, Internal	Done			
10		Send color schemes, logos, images	Internal	Done			
11		Design Login / Splash Page	Vendor	Done			
12		Design Headers for Website	Vendor	Done			
13		Design Headers for Emails	Vendor	Done			
14		<b>Content</b>		<b>Parent</b>			
15		Provide sample welcome text	Vendor	Done - Conflicting View			
16		Provide sample email notifications text	Vendor	Done - Conflicting View			
17		Provide sample promotions text	Vendor	Done - Conflicting View			
18		Approve all content	Internal	Done - Conflicting View			
19		Content and Graphics Master	Vendor	Done - Conflicting View			
20		<b>Data Requirements</b>		<b>Parent</b>			
21		Create data requirements	Vendor	Done			

Project: cr-migration Date: Tue 8/16/16	Task		Inactive Task		Start-only	
	Split		Inactive Milestone		Finish-only	
	Milestone		Inactive Summary		Deadline	
	Summary		Manual Task		Progress	
	Project Summary		Duration-only		Manual Progress	
	External Tasks		Manual Summary Rollup			
	External Milestone		Manual Summary			

ID	Task Mode	Task Name	Resource Names	CR_Status	Feb 23, '14		
					S	M	T
22		Submit data samples	Internal	Done			
23		Submit Full Data Files	Internal	Done			
24		User Acceptance Testing Plan	Vendor,Internal	Done - Conflicting View			
25		Training Plan for Administrators	Vendor,Internal	Open			
26		Launch Plan	Vendor,Internal	In Progress			
27		Approve Scope of Work	Internal	In Progress - Conflicting View			
28		<b>C 3. Development Phase</b>		<b>Parent</b>			
29		<b>CR will complete all coding for approved site design</b>		<b>Parent</b>			
30		<b>(NOT IN SOW) Navigation Setup</b>		<b>New Scope</b>			
31		Provide Partner Portal Nav Links to CR	Internal	Done - New scope			
32		Navigation Links back to Partner Portal	Vendor	Done - New scope			
33		Sales Rep	Vendor	Done - New scope			
34		Dealer Principals	Vendor	Done - New scope			
35		Administrator	Vendor	Open			
36		<b>1.1 Data/Data Transfers</b>		<b>Parent</b>			
37		1.1.1 User data (to CR)	Internal	Done			
38		1.1.2 POS data (to CR)	Internal	Done			
39		1.1.3 Points Exchange (CR back to D-Link)	Vendor	In Progress			
40		(NOT IN SOW) Programs data to CR	Internal	Done			
41		(NOT IN SOW) Quiz data to CR	Internal	Done			
42		<b>1.2 Participants/Access levels</b>	<b>Vendor</b>	<b>Parent</b>			

Project: cr-migration Date: Tue 8/16/16	Task		Inactive Task		Start-only	
	Split		Inactive Milestone		Finish-only	
	Milestone		Inactive Summary		Deadline	
	Summary		Manual Task		Progress	
	Project Summary		Duration-only		Manual Progress	
	External Tasks		Manual Summary Rollup			
	External Milestone		Manual Summary			

ID	Task Mode	Task Name	Resource Names	CR_Status	Feb 23, '14		
					S	M	T
43		<b>1.2.1 Method of Access to CR site:</b>		<b>Parent</b>			
44		SSO Login Service	Vendor	Done			
45		<b>1.2.2 Sales Rep</b>		<b>Parent</b>			
46		Ability to enter/claim sales	Vendor	Done			
47		Ability to take quizzes via the training section	Vendor	Done			
48		Ability to view reporting details in Reporting section for his/her own claims (display validated only)	Vendor	Done			
49		Access to redeem rewards	Vendor	Done			
50		<b>1.2.3 Champion User (Dealer Principal)</b>		<b>Parent</b>			
51		Ability to view reporting details in Reporting section for dealer network	Vendor	Open			
52		Access to redeem rewards	Vendor	Done			
53		<b>1.2.4 Administrator</b>		<b>Parent</b>			
54		Access to reporting detailed in Reporting section	Vendor	Done - Conflicting View			
55		Administrative privileges detailed in Administrative Tools section	Vendor	Done - Conflicting View			
56		<b>1.3 Welcome/Home Page</b>		<b>Parent</b>			
57		1.3.1 Sales Rep	Vendor	Done - Conflicting View			
58		1.3.2 Dealer Principals	Vendor	Done - Conflicting View			
59		1.3.3 Administrator	Vendor	Done - Conflicting View			

Project: cr-migration Date: Tue 8/16/16	Task		Inactive Task		Start-only	
	Split		Inactive Milestone		Finish-only	
	Milestone		Inactive Summary		Deadline	
	Summary		Manual Task		Progress	
	Project Summary		Duration-only		Manual Progress	
	External Tasks		Manual Summary Rollup			
	External Milestone		Manual Summary			

ID	Task Mode	Task Name	Resource Names	CR_Status	Feb 23, '14		
					S	M	T
60		1.3.4 BANK/Redeem Workflow	Vendor	Done			
61		<b>1.4 Submission &amp; Payout Process (Claiming Sales)</b>		<b>Parent</b>			
62		1.4.1 Submit/Claim Sales Workflow	Vendor	Done			
63		<b>1.4.2 Payout</b>	<b>Vendor</b>	<b>Parent</b>			
64		Sales Reps	Vendor	Done			
65		Dealer Principals	Vendor	Done			
66		1.4.3 Claim Management/Admin	Vendor	Done			
67		1.4.4 Points Tool/Admin	Vendor	Done			
68		<b>1.5 Quiz Structure &amp; Payout</b>		<b>Parent</b>			
69		1.5.1 Quiz Workflow	Vendor	Done			
70		1.5.2 Quiz Parameters/Configuration	Vendor	Done			
71		1.5.3 Quiz Payout		Verify			
72		1.6 Email Notifications	Vendor	Open			
73		<b>1.7 Reporting</b>		<b>Parent</b>			
74		<b>1.7.1 Sales Reps</b>	<b>Vendor</b>	<b>Parent</b>			
75		Claims Report	Vendor	Done			
76		<b>1.7.2 Dealer Principals</b>	<b>Vendor</b>	<b>Parent</b>			
77		Claims Report	Vendor	Done			
78		<b>1.7.3 Administrators</b>		<b>Parent</b>			
79		Stats	Vendor	Open - Conflicitng View			
80		Full Sales Report (all dealer networks)	Vendor	Done			
81		Registered User Report	Vendor	Pending acceptance criteria			
82		Reward Report	Vendor	Done - Conflicting View			

Project: cr-migration Date: Tue 8/16/16	Task		Inactive Task		Start-only	
	Split		Inactive Milestone		Finish-only	
	Milestone		Inactive Summary		Deadline	
	Summary		Manual Task		Progress	
	Project Summary		Duration-only		Manual Progress	
	External Tasks		Manual Summary Rollup			
	External Milestone		Manual Summary			

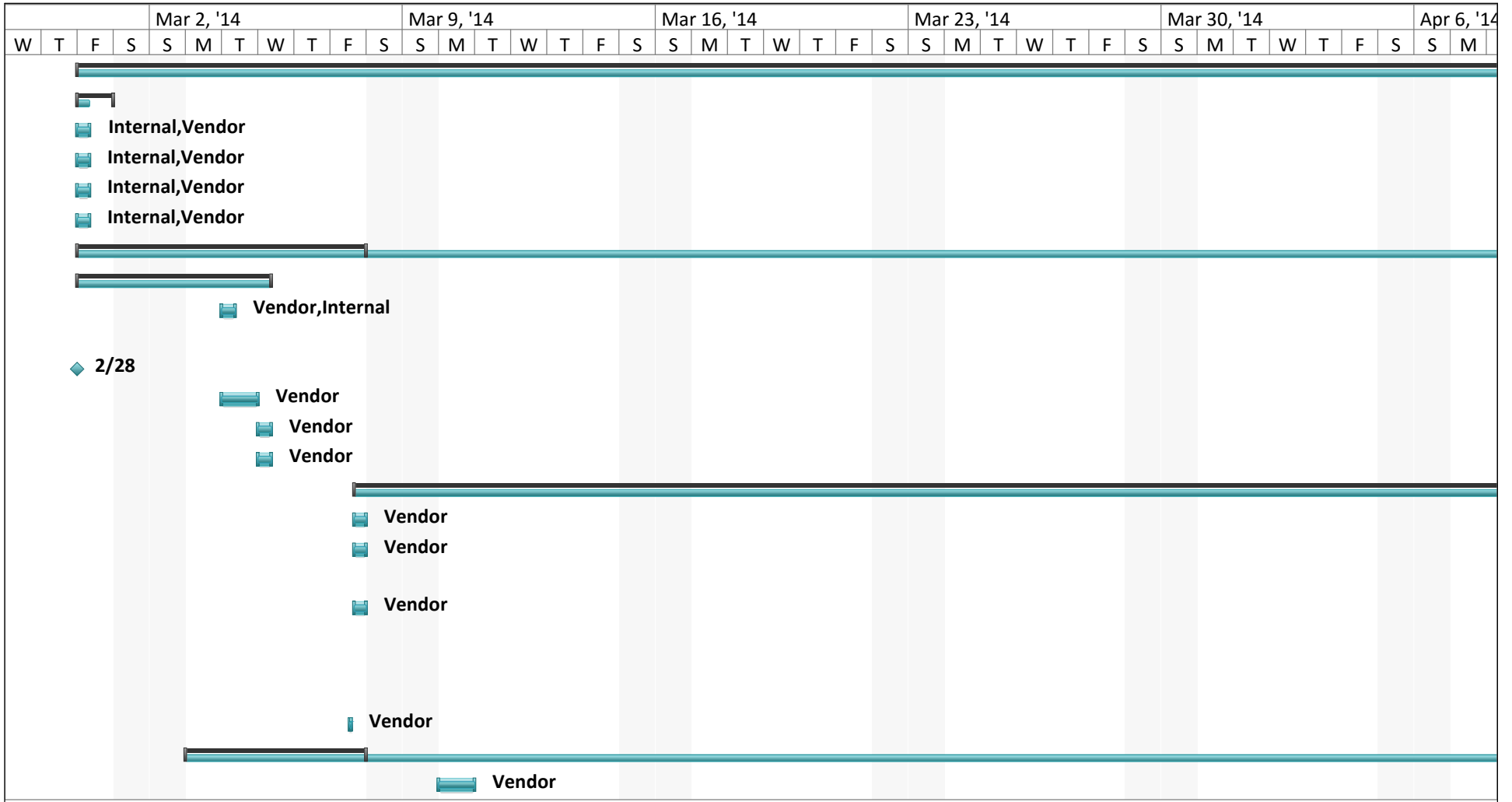
ID	Task Mode	Task Name	Resource Names	CR_Status	Feb 23, '14		
					S	M	T
83		Ad-Hoc Reporting Tool (on-the-fly reporting)	Vendor	Pending acceptance criteria			
84		1.8 (BLANK)		Done			
85		1.9 Client Support	Vendor	Open			
86		CR will include all approved content on website	Vendor	Open			
87		CR will conduct testing on a development site prior to User Acceptance Testing	Vendor	Ongoing			
88		<b>CR will review project status and action items at weekly meeting</b>					
89		<i>WE 03/07/2014</i>	<i>Vendor,Internal</i>				
90		<i>WE 03/14/2014</i>	<i>Vendor,Internal</i>				
91		WE 03/21/2014	Vendor,Internal	Done			
92		WE 03/28/2014	Vendor,Internal	Done			
93		WE 04/04/2014	Vendor,Internal	Done			
94		WE 04/11/2014	Vendor,Internal	Done			
95		WE 04/18/2014	Vendor,Internal	Done			
96		<i>WE 04/25/2014</i>	<i>Vendor,Internal</i>				
97		<i>WE 05/02/2014</i>	<i>Vendor,Internal</i>				
98		<i>WE 05/09/2014</i>	<i>Vendor,Internal</i>				
99		WE 05/16/2014	Vendor,Internal	Open			
100		<b>C 4. User Acceptance Testing (UAT) Phase</b>		<b>Parent</b>			
101		Provide UAT Plan to D-Link	Vendor	Done - Conflicting View			

Project: cr-migration Date: Tue 8/16/16	Task		Inactive Task		Start-only	
	Split		Inactive Milestone		Finish-only	
	Milestone		Inactive Summary		Deadline	
	Summary		Manual Task		Progress	
	Project Summary		Duration-only		Manual Progress	
	External Tasks		Manual Summary Rollup			
	External Milestone		Manual Summary			

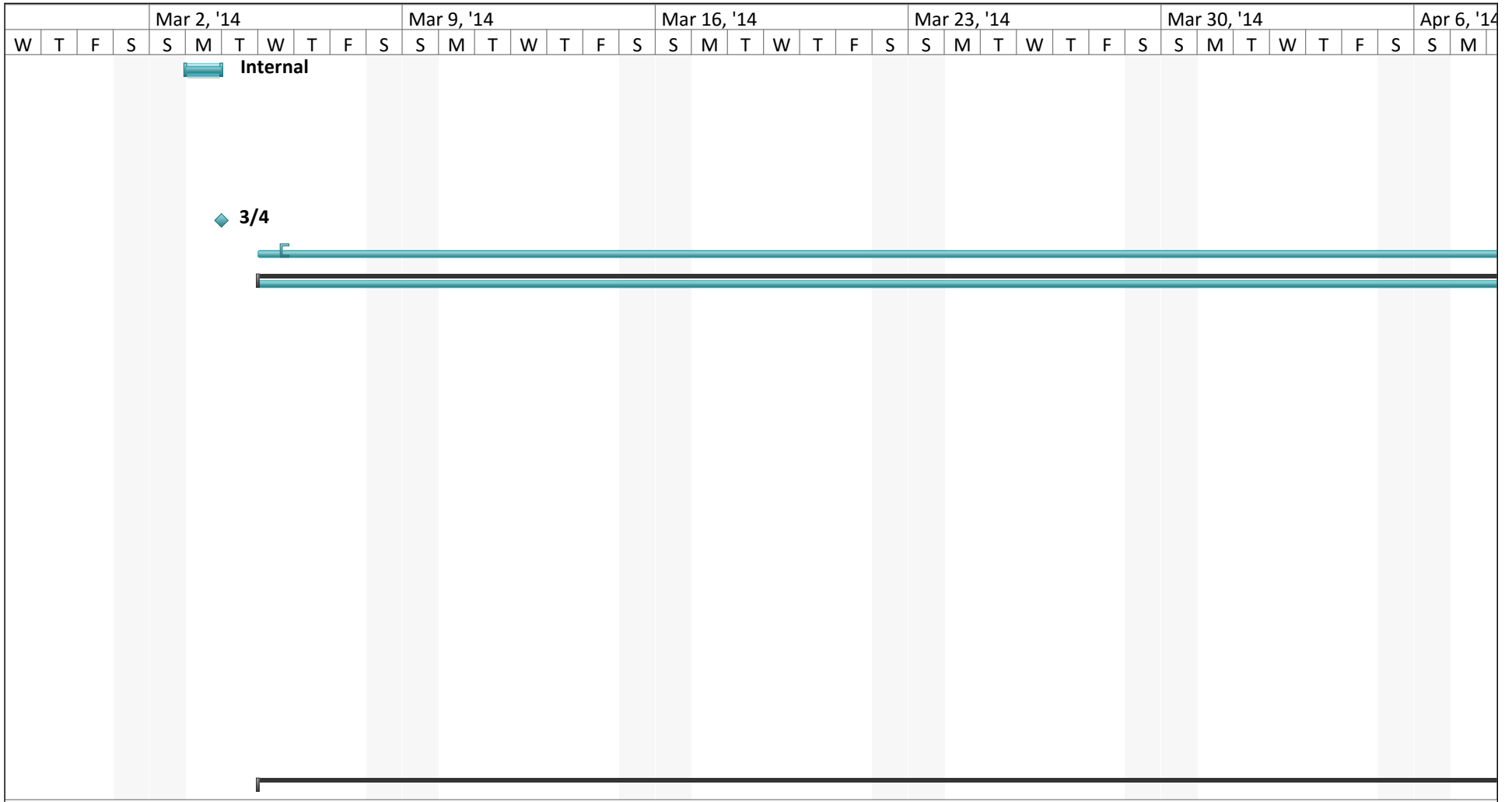
ID	Task Mode	Task Name	Resource Names	CR_Status	Feb 23, '14		
					S	M	T
102		CR will resolve any coding and site issues identified in testing	Vendor	Ongoing			
103		CR will review project status and action items at weekly meeting	Vendor	Ongoing			
104		<b>C 5. Training &amp; Migration Phase</b>		<b>Parent</b>			
105		CR will provide administrator training in accordance with approved training plan developed during Scoping	Vendor				
106		CR will implement the approved web site on live CR	Vendor	Done - Conflicting View			
107		CR Introduces Client Services Support Team	Vendor	Pending			
108		CR will review project status and action items at weekly meeting	Vendor	Dupe			
109		<b>C 6. Project Handoff/Closure</b>		<b>Parent</b>			
110		CR will provide D-Link with all documentation in accordance with the approved project plan	Vendor				
111		CR will conduct approximately 2 weekly meetings after launch and eventually move to a monthly meeting schedule at the discretion of CR and D-Link	Vendor	Pending			
112		D. Acceptance Criteria	Internal	Ongoing			

--

Project: cr-migration Date: Tue 8/16/16	Task		Inactive Task		Start-only	
	Split		Inactive Milestone		Finish-only	
	Milestone		Inactive Summary		Deadline	
	Summary		Manual Task		Progress	
	Project Summary		Duration-only		Manual Progress	
	External Tasks		Manual Summary Rollup			
	External Milestone		Manual Summary			

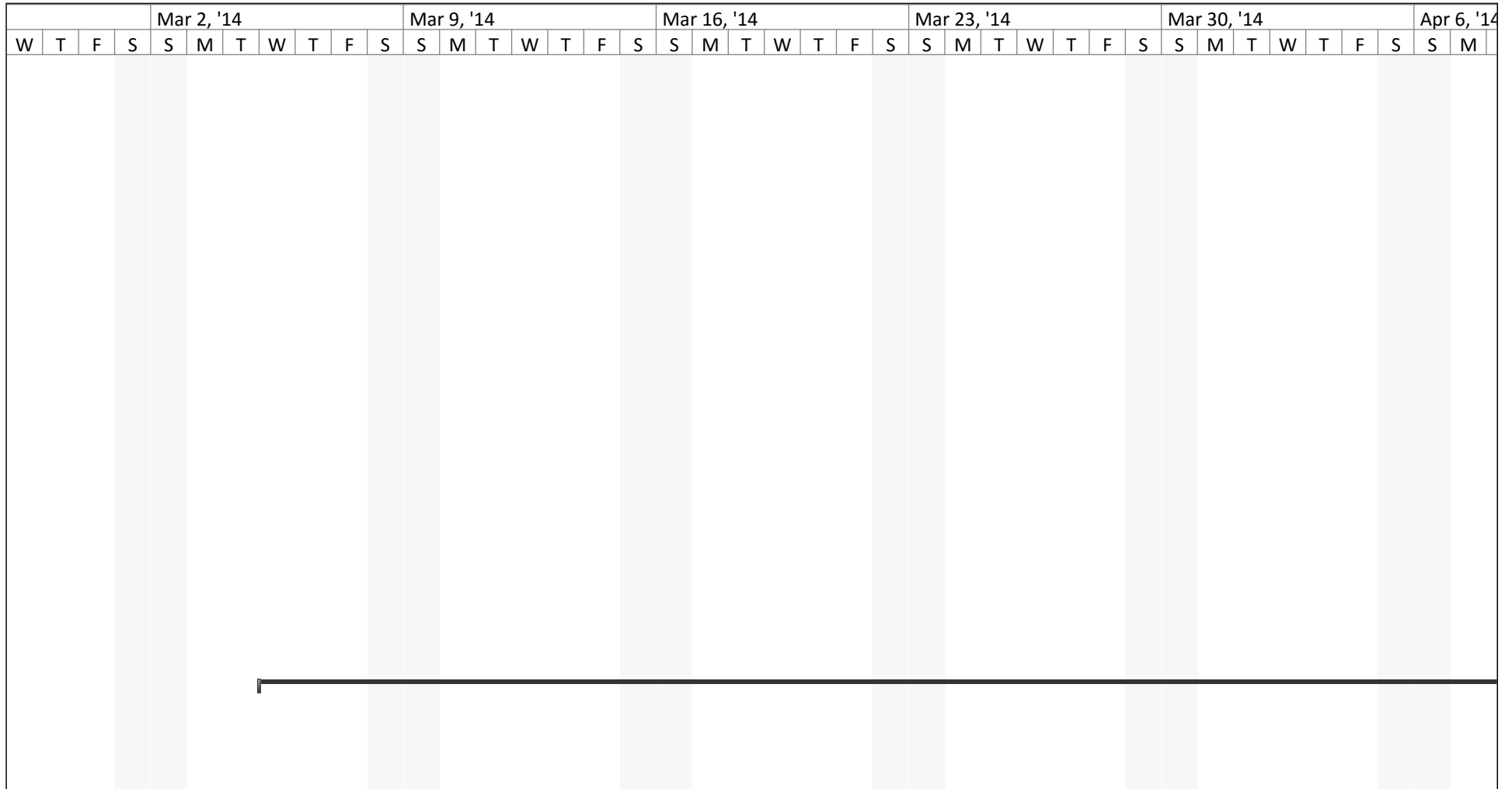


Project: cr-migration Date: Tue 8/16/16	Task		Inactive Task		Start-only	
	Split		Inactive Milestone		Finish-only	
	Milestone		Inactive Summary		Deadline	
	Summary		Manual Task		Progress	
	Project Summary		Duration-only		Manual Progress	
	External Tasks		Manual Summary Rollup			
	External Milestone		Manual Summary			

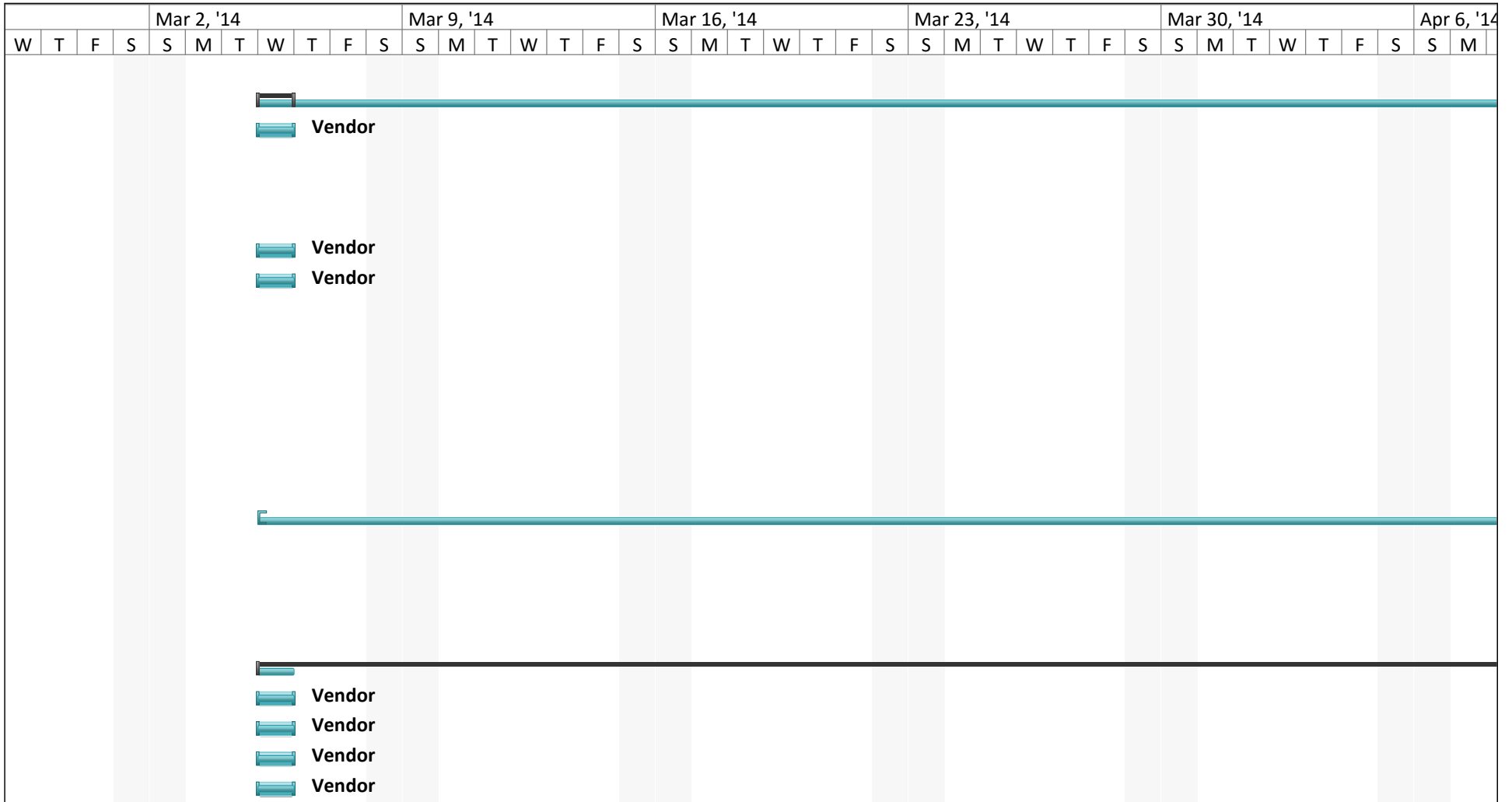


Project: cr-migration Date: Tue 8/16/16	Task		Inactive Task		Start-only	
	Split		Inactive Milestone	◆	Finish-only	
	Milestone	◆	Inactive Summary		Deadline	
	Summary		Manual Task		Progress	
	Project Summary		Duration-only		Manual Progress	
	External Tasks		Manual Summary Rollup			
	External Milestone	◆	Manual Summary			

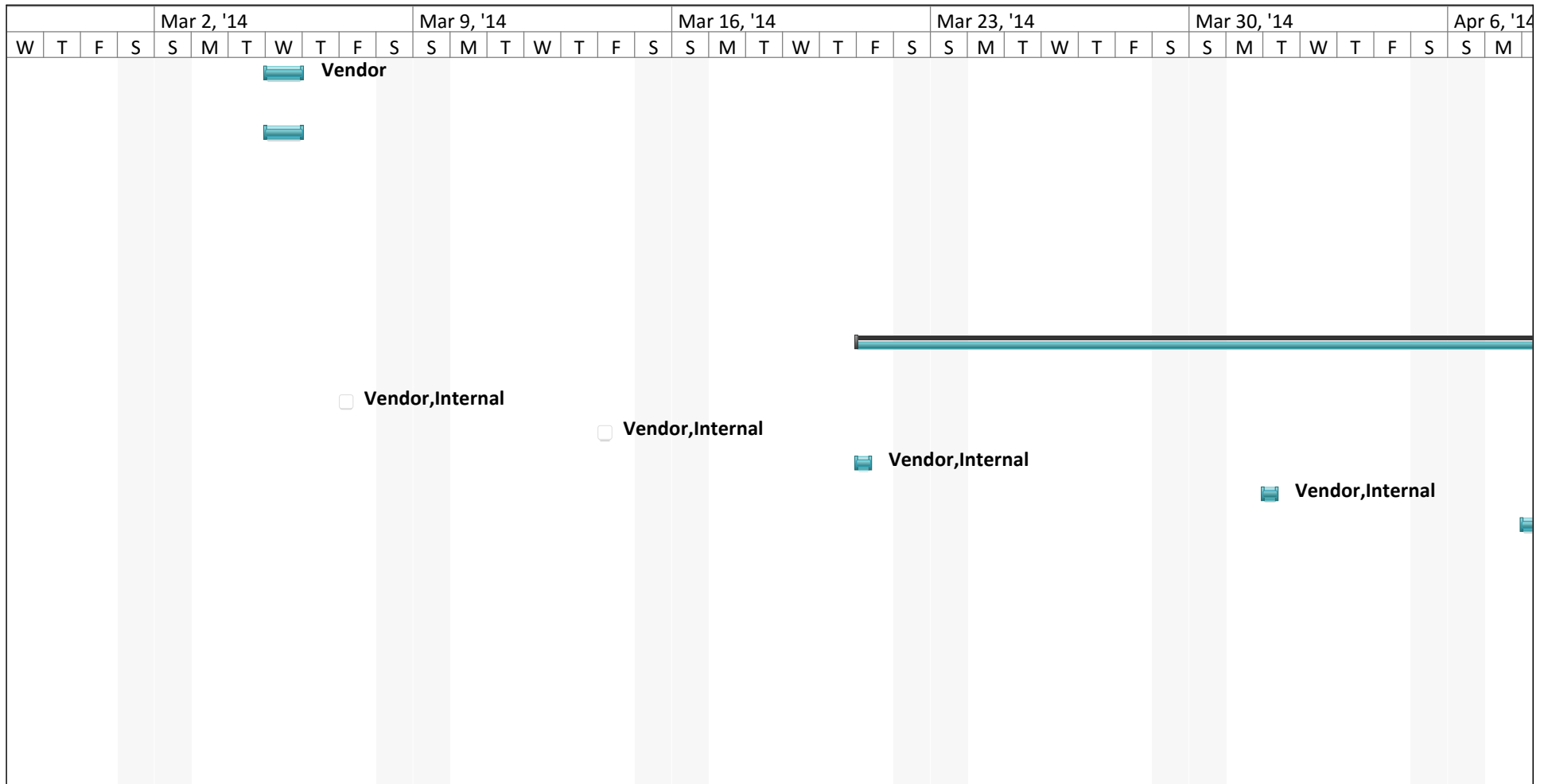




Project: cr-migration Date: Tue 8/16/16	Task		Inactive Task		Start-only	
	Split		Inactive Milestone		Finish-only	
	Milestone		Inactive Summary		Deadline	
	Summary		Manual Task		Progress	
	Project Summary		Duration-only		Manual Progress	
	External Tasks		Manual Summary Rollup			
	External Milestone		Manual Summary			

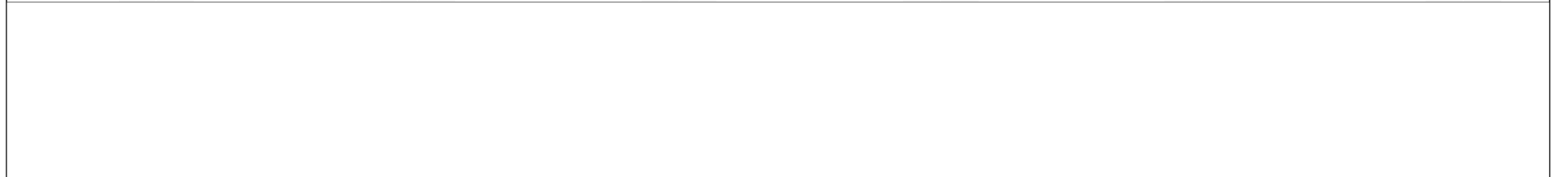
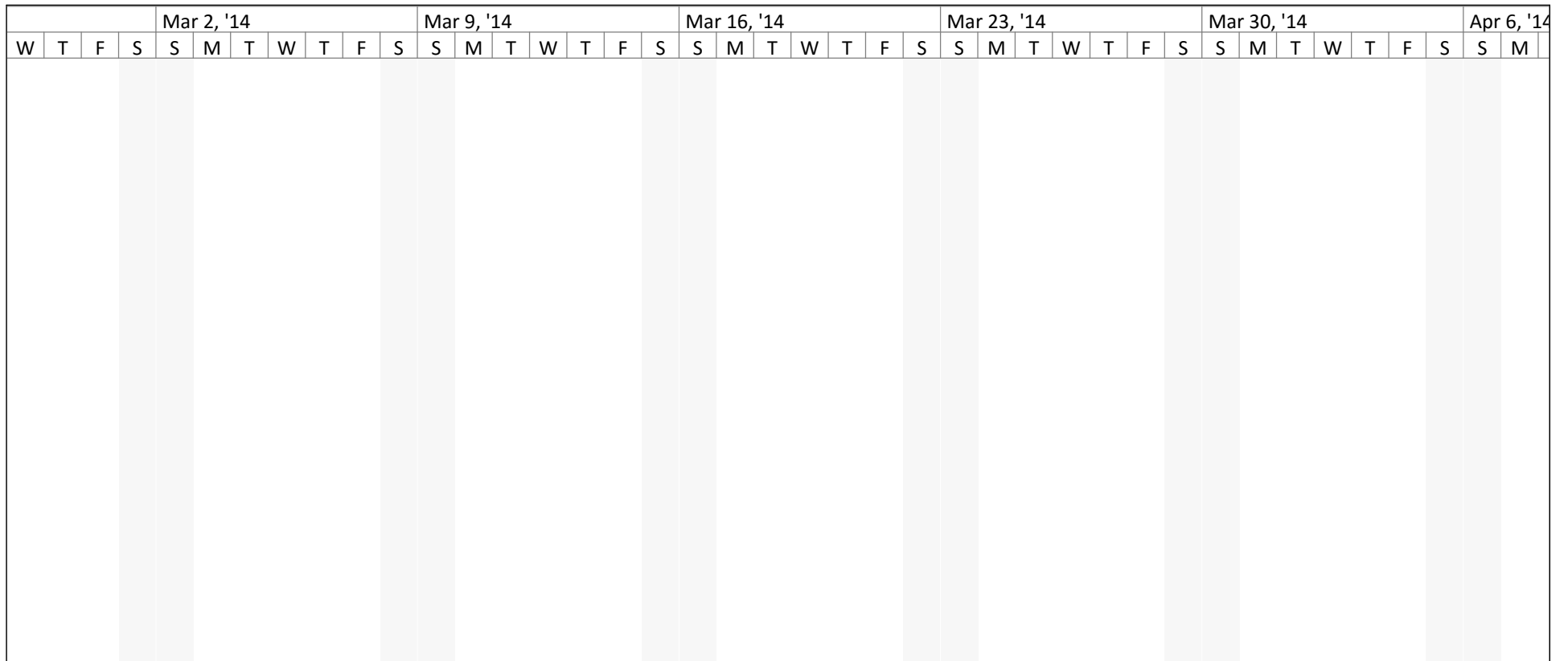


Project: cr-migration Date: Tue 8/16/16	Task		Inactive Task		Start-only	
	Split		Inactive Milestone		Finish-only	
	Milestone		Inactive Summary		Deadline	
	Summary		Manual Task		Progress	
	Project Summary		Duration-only		Manual Progress	
	External Tasks		Manual Summary Rollup			
	External Milestone		Manual Summary			

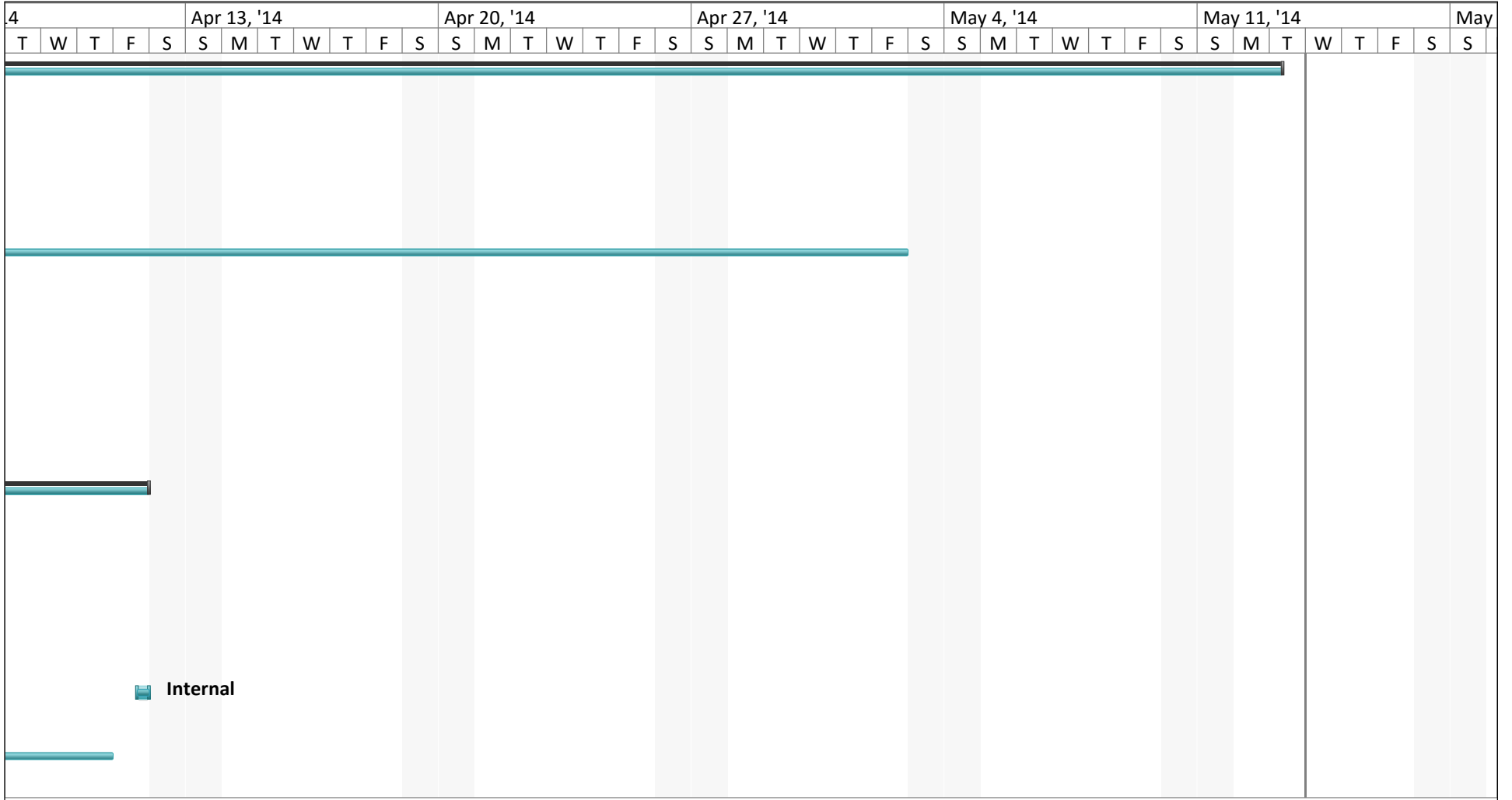


Project: cr-migration  
Date: Tue 8/16/16

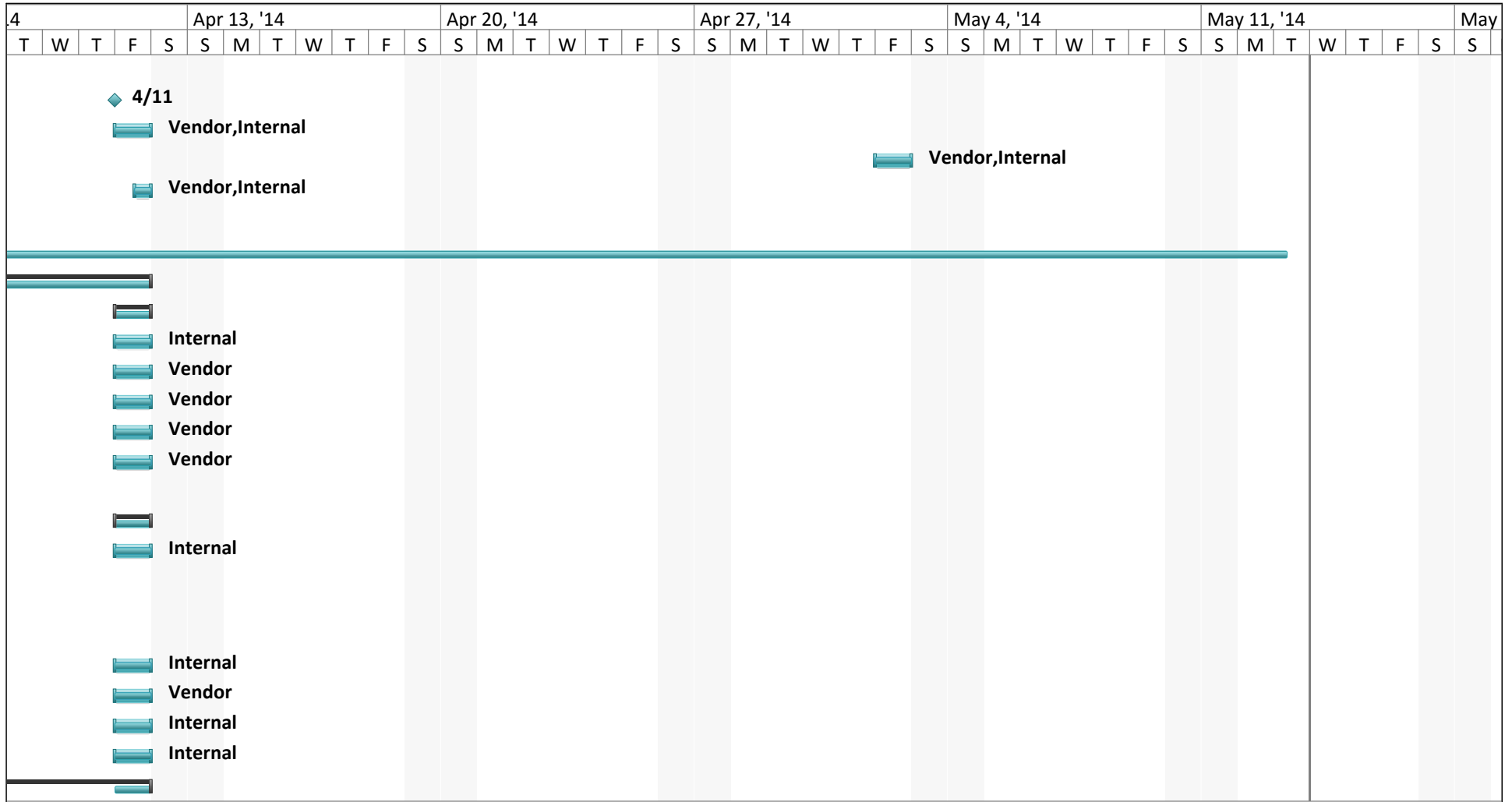
Task		Inactive Task		Start-only	
Split		Inactive Milestone		Finish-only	
Milestone		Inactive Summary		Deadline	
Summary		Manual Task		Progress	
Project Summary		Duration-only		Manual Progress	
External Tasks		Manual Summary Rollup			
External Milestone		Manual Summary			



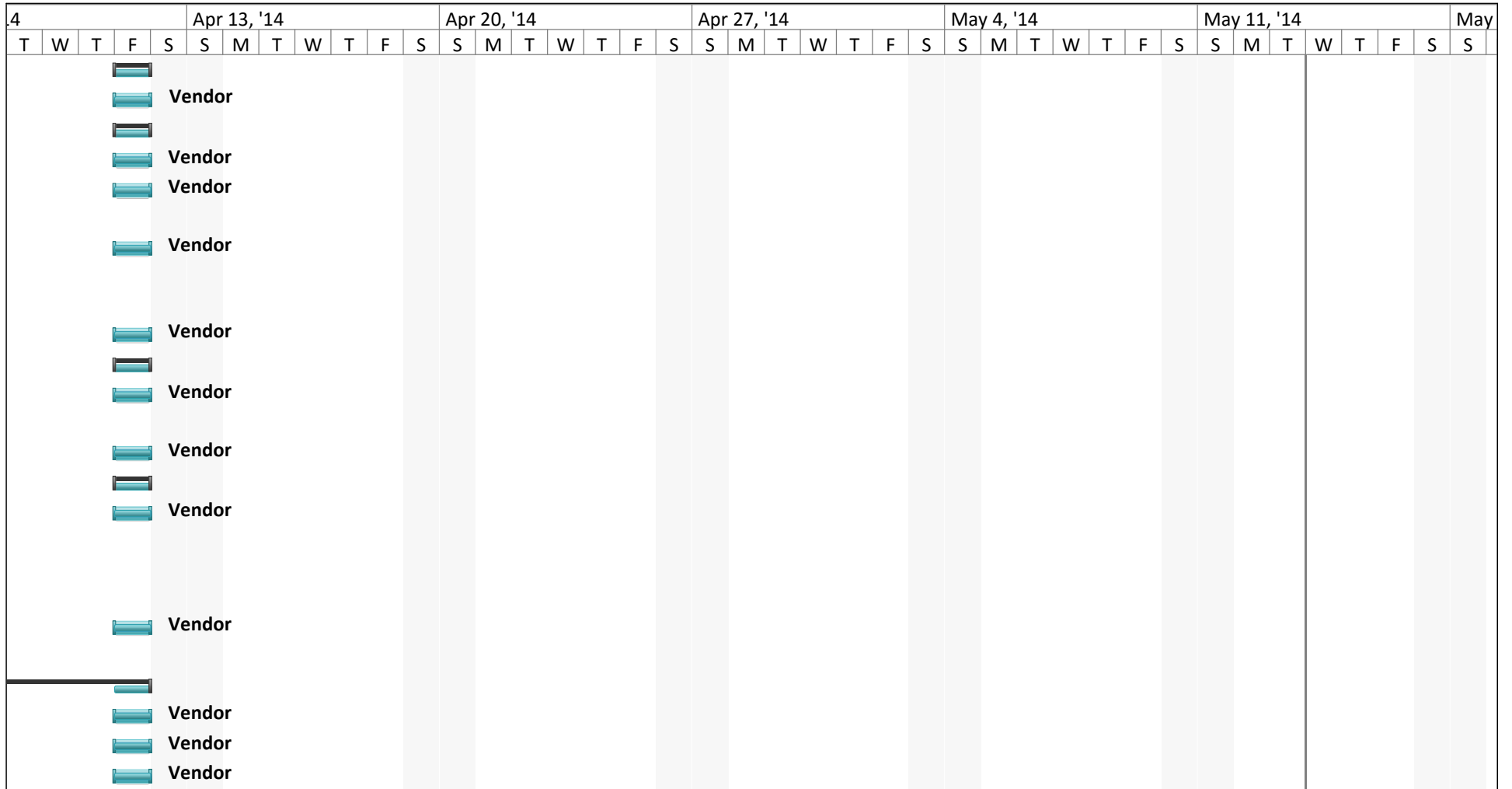
Project: cr-migration Date: Tue 8/16/16	Task		Inactive Task		Start-only	
	Split		Inactive Milestone		Finish-only	
	Milestone		Inactive Summary		Deadline	
	Summary		Manual Task		Progress	
	Project Summary		Duration-only		Manual Progress	
	External Tasks		Manual Summary Rollup			
	External Milestone		Manual Summary			



Project: cr-migration Date: Tue 8/16/16	Task		Inactive Task		Start-only	
	Split		Inactive Milestone		Finish-only	
	Milestone		Inactive Summary		Deadline	
	Summary		Manual Task		Progress	
	Project Summary		Duration-only		Manual Progress	
	External Tasks		Manual Summary Rollup			
	External Milestone		Manual Summary			



Project: cr-migration Date: Tue 8/16/16	Task		Inactive Task		Start-only	
	Split		Inactive Milestone	◆	Finish-only	
	Milestone	◆	Inactive Summary		Deadline	↓
	Summary		Manual Task		Progress	
	Project Summary		Duration-only		Manual Progress	
	External Tasks		Manual Summary Rollup			
	External Milestone	◆	Manual Summary			

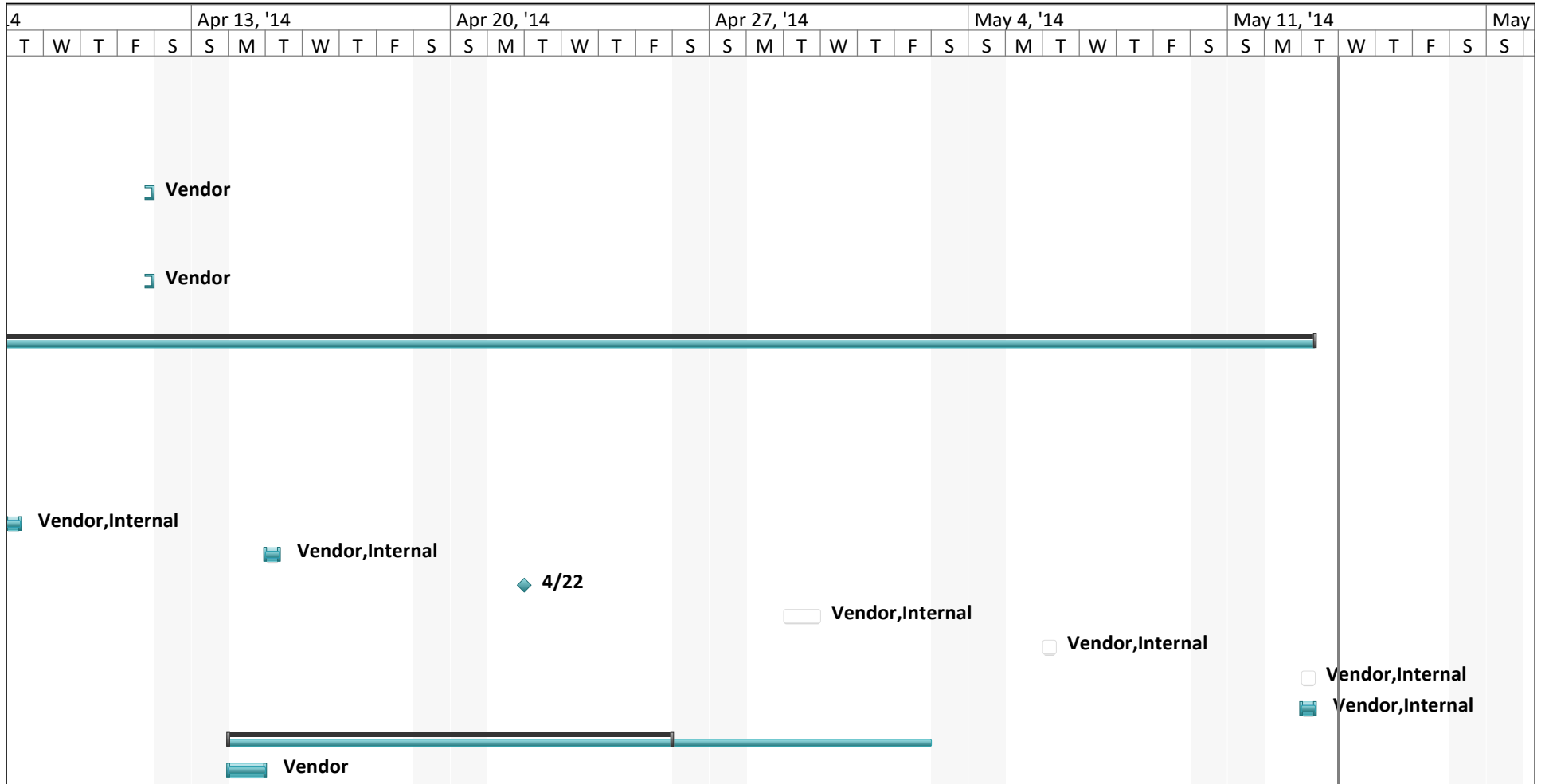


Project: cr-migration Date: Tue 8/16/16	Task		Inactive Task		Start-only	
	Split		Inactive Milestone		Finish-only	
	Milestone		Inactive Summary		Deadline	
	Summary		Manual Task		Progress	
	Project Summary		Duration-only		Manual Progress	
	External Tasks		Manual Summary Rollup			
	External Milestone		Manual Summary			

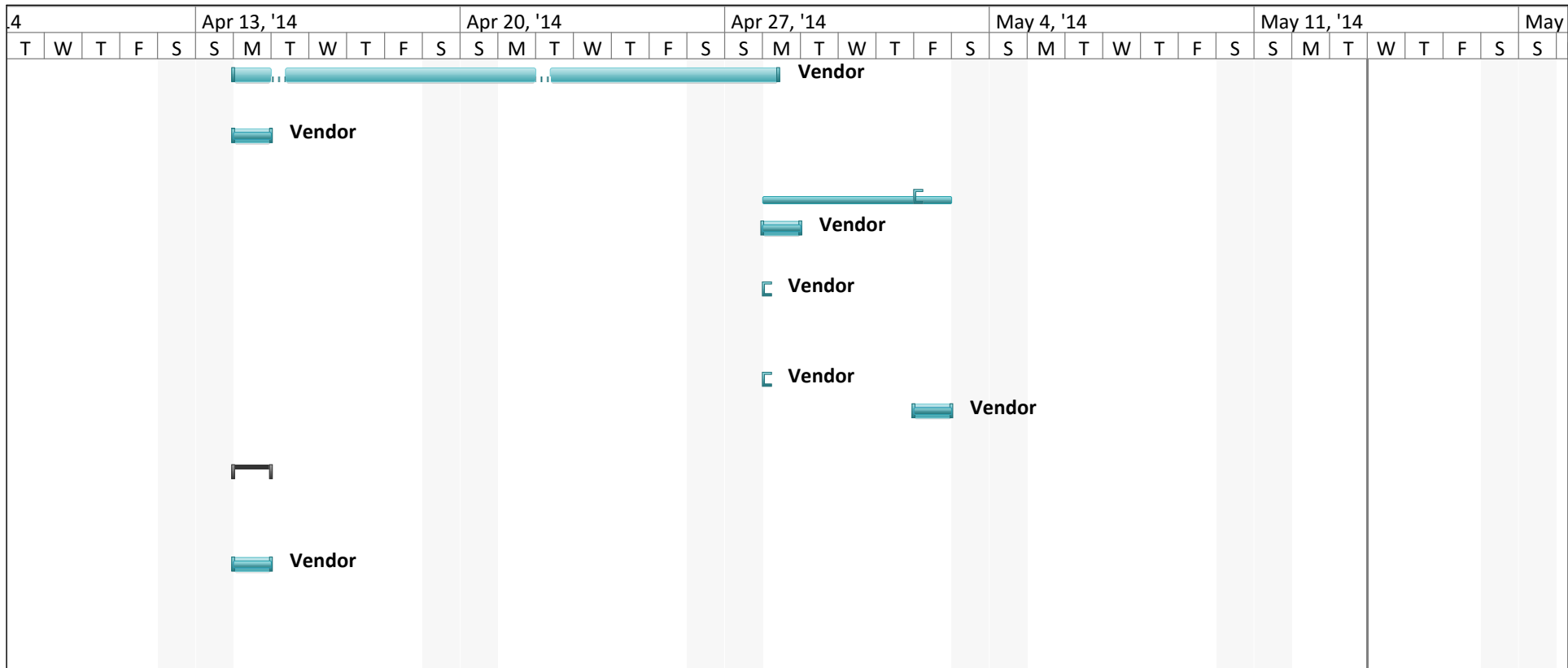


Project: cr-migration Date: Tue 8/16/16	Task		Inactive Task		Start-only	
	Split		Inactive Milestone		Finish-only	
	Milestone		Inactive Summary		Deadline	
	Summary		Manual Task		Progress	
	Project Summary		Duration-only		Manual Progress	
	External Tasks		Manual Summary Rollup			
	External Milestone		Manual Summary			





Project: cr-migration Date: Tue 8/16/16	Task		Inactive Task		Start-only	
	Split		Inactive Milestone		Finish-only	
	Milestone		Inactive Summary		Deadline	
	Summary		Manual Task		Progress	
	Project Summary		Duration-only		Manual Progress	
	External Tasks		Manual Summary Rollup			
	External Milestone		Manual Summary			



Project: cr-migration  
Date: Tue 8/16/16

Task		Inactive Task		Start-only	
Split		Inactive Milestone		Finish-only	
Milestone		Inactive Summary		Deadline	
Summary		Manual Task		Progress	
Project Summary		Duration-only		Manual Progress	
External Tasks		Manual Summary Rollup			
External Milestone		Manual Summary			